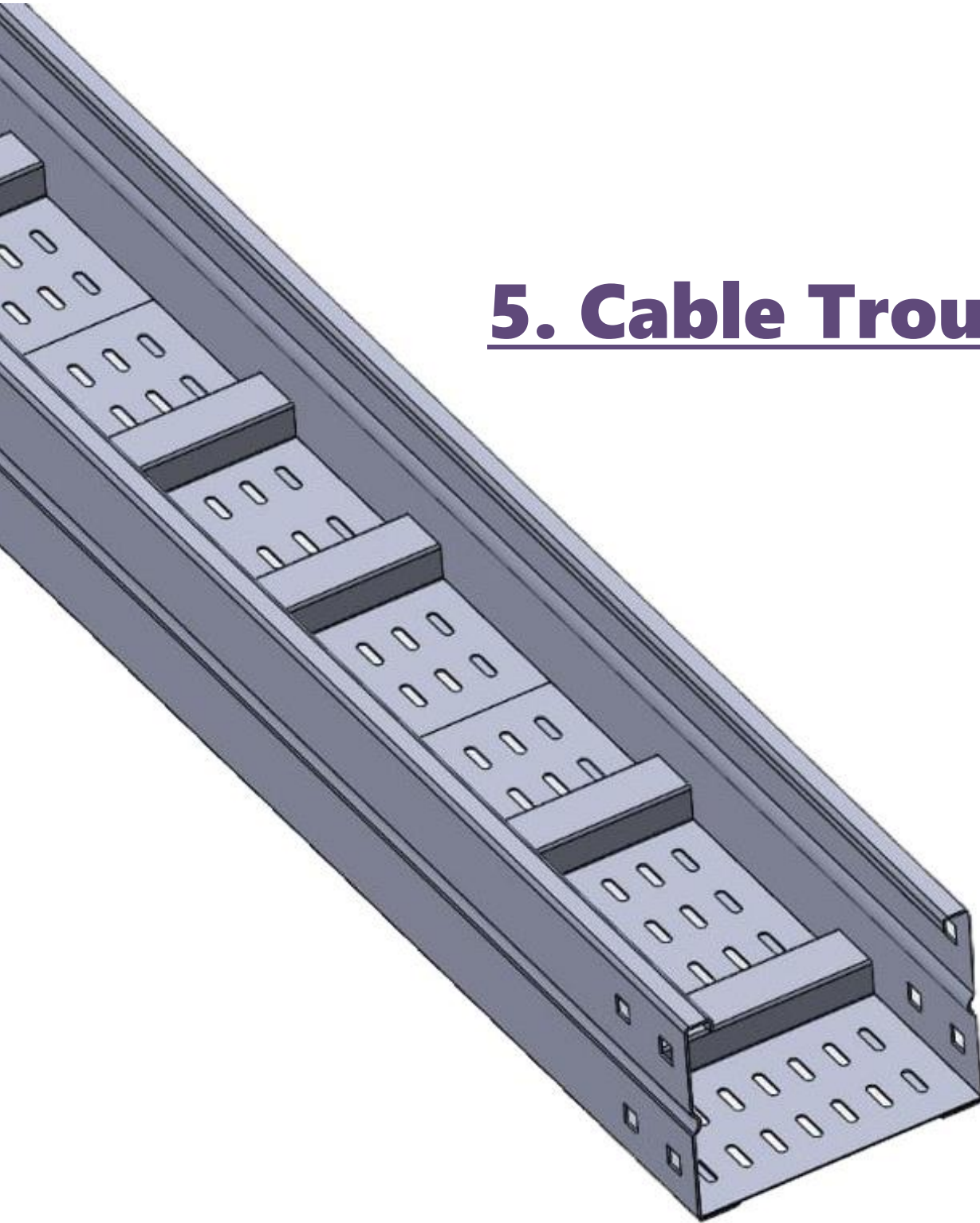


5. Cable Trough



5. Cable Trough

Specifications:

Material: (According to NEMA - VE1 standarad)

Steel / Stainless Steel / Aluminum

Surface Finish:

- Hot- dip galvanized after fabrication according to ASTM A123 & DIN 50976 - zinc coating thickness on one side 50-60 μ m (350-420 gm²)
- Pre galvanized according to ASTM653 SS & DIN 17162 on both sides 275 gm./m.
- Electrostatic Painting.
- Electroplated according to ASTM B 633.

Side Standard height:

60 mm Up To 200 mm

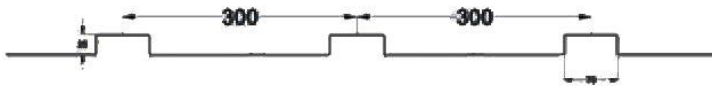
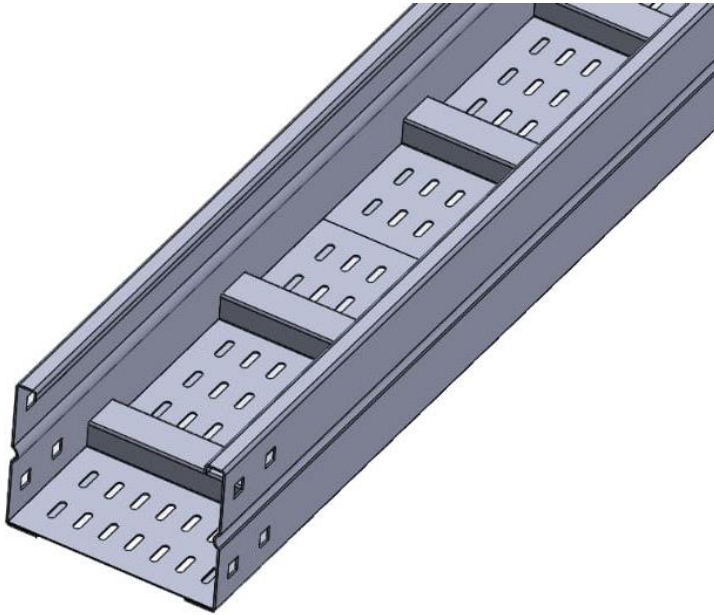
Standard Length: 2000 & 3000 & 6000 mm

Standard Width: 100 Up to 1200 mm

Rungs :

Size (WxH) : (70 x 25) mm

Spacing : (300) mm



How to order :	(Example)	PG-TRHT60- H=100 - S - SOT - HD - T - Rs - Sp		
Code Description :	PG : PG-Line	TRHT : Trough Tray	60 : Trough Side Height	100 : Trough Width
Material Type :	S : Steel	SS : Stainless Steel	AL : Aluminum	T:Thickness (1.5 - 2.0)mm
Type of Tray side :	I : Int. Return Flange	SOT : Snap-On Tray	Rs : Rung Size (WxH)	Sp : Rung spacing
Surface Finish :	P : Pre-Galvanized	HD : Hot Dip Galvanized	ES : Electrostatic Painted	EP : Electroplated

Code #	Width (W) (mm)	Side Height (H) (mm)	Thickness (mm)
--------	----------------	----------------------	----------------

5.1 Cable Trough - Straight Element

PG-TRHT-H-100	100	H=60	1.5 – 2.0
PG- TRHT-H-200	200		1.5 – 2.0
PG- TRHT-H-300	300		1.5 – 2.0
PG- TRHT-H-400	400		1.5 – 2.0
PG- TRHT-H-500	500		1.5 – 2.0
PG- TRHT-H-600	600		1.5 – 2.0
PG- TRHT-H-700	700		1.5 – 2.0
PG- TRHT-H-800	800		1.5 – 2.0
PG- TRHT-H-900	900		1.5 – 2.0
PG- TRHT-H-1000	1000		1.5 – 2.0
PG- TRHT-H-1100	1100	H=150	1.5 – 2.0
PG- TRHT-H-1200	1200		1.5 – 2.0
PG- TRHT-H-200	200		1.5 – 2.0
PG- TRHT-H-300	300		1.5 – 2.0
PG- TRHT-H-400	400		1.5 – 2.0
PG- TRHT-H-500	500		1.5 – 2.0
PG- TRHT-H-600	600		1.5 – 2.0
PG- TRHT-H-700	700		1.5 – 2.0
PG- TRHT-H-800	800		1.5 – 2.0
PG- TRHT-H-900	900		1.5 – 2.0
PG- TRHT-H-1000	1000		1.5 – 2.0
PG- TRHT-H-1100	1100		1.5 – 2.0
PG- TRHT-H-1200	1200	1.5 – 2.0	

5.1 Cable Trough - Straight Element

Side Standard height:

60 mm Up To 200 mm

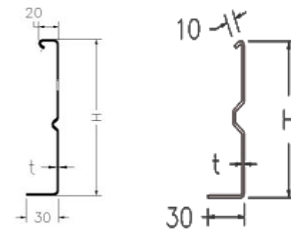
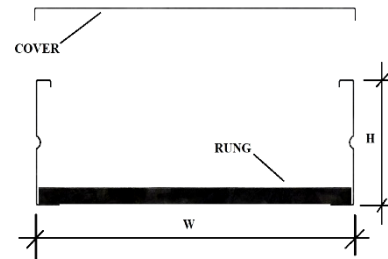
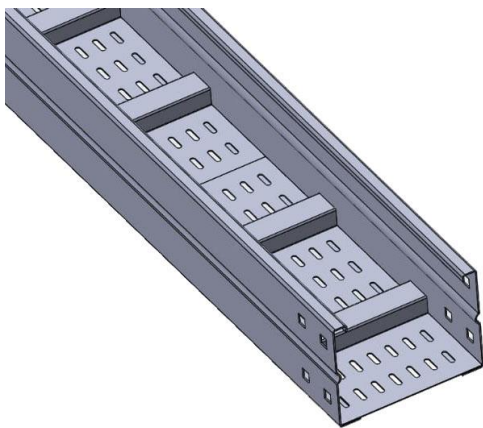
Standard Length: 2000 & 3000 & 6000 mm

Standard Width: 100 Up to 1200 mm

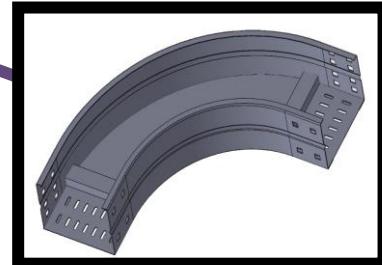
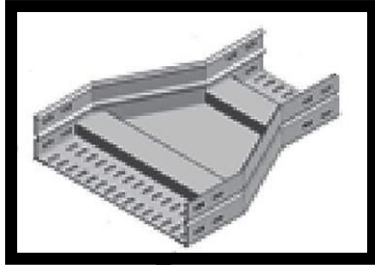
Rungs :

Size : (70 x 25) mm

Spacing : (300) mm



How to order :	(Example)	PG-TRHT60- H=100 - S - SOT - HD - T - Rs - Sp			
Code Description :	PG : PG-Line	TRHT : Trough Tray	60 : Trough Side Height	100 : Trough Width	
Material Type :	S : Steel	SS : Stainless Steel	AL : Aluminum	T:Thickness (1.5 - 2.0)mm	
Type of Tray side :	I : Int. Return Flange	SOT : Snap-On Tray	Rs : Rung Size (WxH)	Sp : Rung spacing	
Surface Finish :	P : Pre-Galvanized	HD : Hot Dip Galvanized	ES : Electrostatic Painted	EP : Electroplated	



5.2 Cable Trough Fittings

Specifications:

Material: (According to NEMA - VE1 standarad)
Steel / Stainless Steel

Surface Finish:

- Hot- dip galvanized after fabrication according to ASTM A123 & DIN 50976 - zinc coating thickness on one side 50-60 μ m (350-420 gm²)
- Pre galvanized according to ASTM653 SS & DIN 17162 on both sides 275 gm./m.
- Electrostatic Painting.
- Electroplated according to ASTM B 633.

Side Standard height:

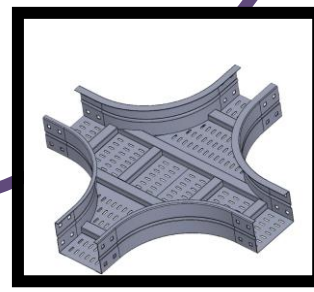
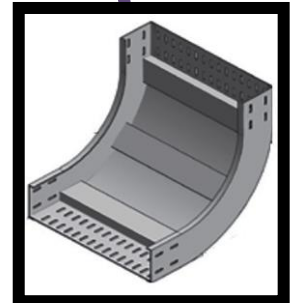
60 mm Up To 200 mm

Standard Width: 100 Up to 1000 mm

Rungs :

Size (WxH) : (70X25) mm

Spacing : (300) mm



How to order :	(Example)	PG-TRHT60- H=100 - S - SOT - HD - T - Rs - Sp		
Code Description :	PG : PG-Line	TRHT : Trough Tray	60 : Trough Side Height	100 : Trough Width
Material Type :	S : Steel	SS : Stainless Steel	AL : Aluminum	T:Thickness (1.5 - 2.0)mm
Type of Tray side :	I : Int. Return Flange	SOT : Snap-On Tray	Rs : Rung Size (WxH)	Sp : Rung spacing
Surface Finish :	P : Pre-Galvanized	HD : Hot Dip Galvanized	ES : Electrostatic Painted	EP : Electroplated

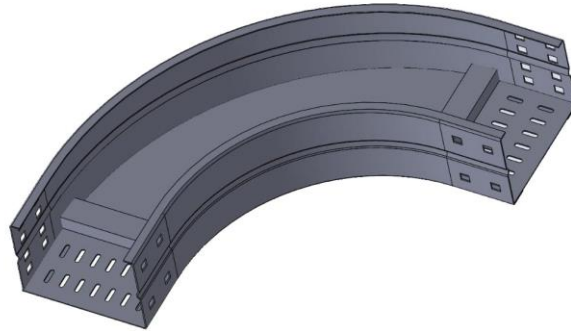
5.2.1 Cable Trough - Horizontal Elbow 90°

Side Standard height:

60 mm Up To 200 mm

Standard Width: 100 Up to 1000 mm

Rung's Size: (70X25) mm



Code #	Width (W) (mm)	Side Height (H) (mm)	Thick. (mm)	X (mm)	Y (mm)	R (mm)
--------	----------------	----------------------	-------------	--------	--------	--------

5.2.1 Cable Trough - Horizontal Elbow 90°

PG-TRHE90-H-100	100		1.5 – 2.0	500	500	300
PG- TRHE90-H-200	200		1.5 – 2.0	600	600	
PG- TRHE90-H-300	300		1.5 – 2.0	700	700	
PG- TRHE90-H-400	400	H=60	1.5 – 2.0	1100	1100	600
PG- TRHE90-H-500	500	H=100	1.5 – 2.0	1200	1200	
PG- TRHE90-H-600	600	H=125	1.5 – 2.0	1300	1300	
PG- TRHE90-H-700	700	H=150	1.5 – 2.0	1400	1400	
PG- TRHE90-H-800	800	H=175	1.5 – 2.0	1500	1500	
PG- TRHE90-H-900	900	H=200	1.5 – 2.0	1600	1600	
PG- TRHE90-H-1000	1000		1.5 – 2.0	1700	1700	

How to order : (Example)

PG-TRHT60- H=100 - S - SOT - HD - T - Rs - Sp

Code Description :	PG : PG-Line	TRHT : Trough Tray	60 : Trough Side Height	100 : Trough Width
Material Type :	S : Steel	SS : Stainless Steel	AL : Aluminum	T:Thickness (1.5 - 2.0)mm
Type of Tray side :	I : Int. Return Flange	SOT : Snap-On Tray	Rs : Rung Size (WxH)	Sp : Rung spacing
Surface Finish :	P : Pre-Galvanized	HD : Hot Dip Galvanized	ES : Electrostatic Painted	EP : Electroplated

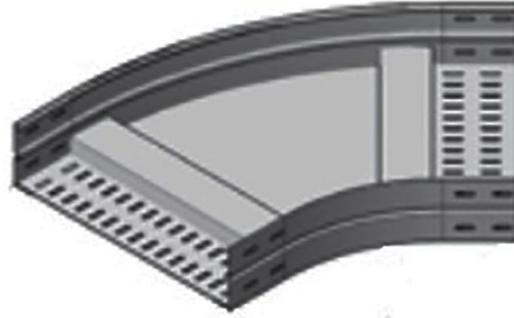
5.2.2 Cable Trough - Horizontal Elbow 45°

Side Standard height:

60 mm Up To 200 mm

Standard Width: 100 Up to 1000 mm

Rung's Size: (70X25) mm



Code #	Width (W) (mm)	Side Height (H) (mm)	Thick. (mm)	X (mm)	Y (mm)	R (mm)
--------	----------------	----------------------	-------------	--------	--------	--------

5.2.2 Cable Trough - Horizontal Elbow 45°

PG-TRHE45-H-100	100	H=60 H=100 H=125 H=150 H=175 H=200	1.5 – 2.0	260	455	300
PG- TRHE45-H-200	200		1.5 – 2.0	360	525	
PG- TRHE45-H-300	300		1.5 – 2.0	460	596	
PG- TRHE45-H-400	400		1.5 – 2.0	448	880	
PG- TRHE45-H-500	500		1.5 – 2.0	749	950	
PG- TRHE45-H-600	600		1.5 – 2.0	850	1025	
PG- TRHE45-H-700	700		1.5 – 2.0	950	1095	600
PG- TRHE45-H-800	800		1.5 – 2.0	1050	1165	
PG- TRHE45-H-900	900		1.5 – 2.0	1150	1235	
PG- TRHE45-H-1000	1000		1.5 – 2.0	1250	1305	

How to order : (Example) PG-TRHT60- H=100 - S - SOT - HD - T - Rs - Sp

Code Description :	PG : PG-Line	TRHT : Trough Tray	60 : Trough Side Height	100 : Trough Width
Material Type :	S : Steel	SS : Stainless Steel	AL : Aluminum	T:Thickness (1.5 - 2.0)mm
Type of Tray side :	I : Int. Return Flange	SOT : Snap-On Tray	Rs : Rung Size (WxH)	Sp : Rung spacing
Surface Finish :	P : Pre-Galvanized	HD : Hot Dip Galvanized	ES : Electrostatic Painted	EP : Electroplated

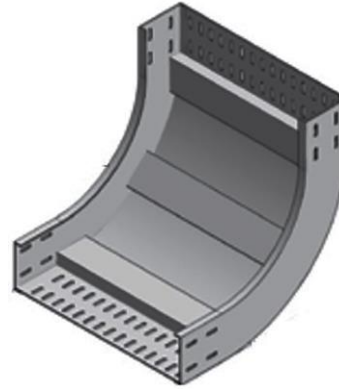
5.2.3 Cable Trough - Vertical inside Elbow 90°

Side Standard height:

60 mm Up To 200 mm

Standard Width: 100 Up to 1000 mm

Rung's Size: (70X25) mm



Code #	Width (W) (mm)	Side Height (H) (mm)	Thick. (mm)	X (mm)	Y (mm)	R (mm)
--------	----------------	----------------------	-------------	--------	--------	--------

3.2.3 Cable Trough - Vertical inside Elbow 90°

PG-TRHVIE90-H-100	100	H=60 H=100 H=125 H=150 H=175 H=200	1.5 – 2.0	465	465	300
PG- TRHVIE90-H-200	200		1.5 – 2.0	505	505	
PG- TRHVIE90-H-300	300		1.5 – 2.0	560	560	
PG- TRHVIE90-H-400	400		1.5 – 2.0	580	580	600
PG- TRHVIE90-H-500	500		1.5 – 2.0	750	950	
PG- TRHVIE90-H-600	600		1.5 – 2.0	465	465	
PG- TRHVIE90-H-700	700		1.5 – 2.0	505	505	
PG- TRHVIE90-H-800	800		1.5 – 2.0	560	560	
PG- TRHVIE90-H-900	900		1.5 – 2.0	580	580	
PG- TRHVIE90-H-1000	1000		1.5 – 2.0	1250	1305	

How to order : (Example) PG-TRHT60- H=100 - S - SOT - HD - T - Rs - Sp

Code Description	PG : PG-Line	TRHT : Trough Tray	60 : Trough Side Height	100 : Trough Width
Material Type	S : Steel	SS : Stainless Steel	AL : Aluminum	T:Thickness (1.5 - 2.0)mm
Type of Tray side	I : Int. Return Flange	SOT : Snap-On Tray	Rs : Rung Size (WxH)	Sp : Rung spacing
Surface Finish	P : Pre-Galvanized	HD : Hot Dip Galvanized	ES : Electrostatic Painted	EP : Electroplated

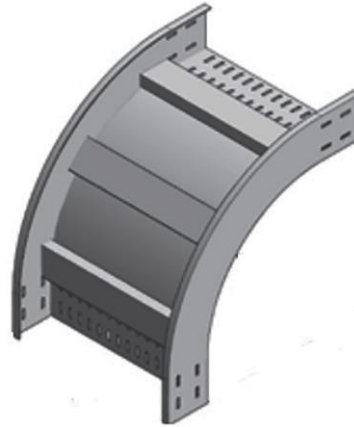
5.2.4 Cable Trough - Vertical outside Elbow 90°

Side Standard height:

60 mm Up To 200 mm

Standard Width: 100 Up to 1000 mm

Rung's Size: (70X25) mm



Code #	Width (W) (mm)	Side Height (H) (mm)	Thick. (mm)	X (mm)	Y (mm)	R (mm)
--------	----------------	----------------------	-------------	--------	--------	--------

5.2.4 Cable Trough - Vertical Outside Elbow 90°

PG-TRHVOE90-H-100	100	H=60	1.5 – 2.0	465	465	300
PG- TRHVOE90-H-200	200		1.5 – 2.0	505	505	
PG- TRHVOE90-H-300	300		1.5 – 2.0	560	560	
PG- TRHVOE90-H-400	400	H=100	1.5 – 2.0	580	580	600
PG- TRHVOE90-H-500	500	H=125	1.5 – 2.0	750	950	
PG- TRHVOE90-H-600	600	H=150	1.5 – 2.0	465	465	
PG- TRHVOE90-H-700	700	H=175	1.5 – 2.0	505	505	
PG- TRHVOE90-H-800	800	H=200	1.5 – 2.0	560	560	
PG- TRHVOE90-H-900	900		1.5 – 2.0	580	580	
PG- TRHVOE90-H-1000	1000		1.5 – 2.0	1250	1305	

How to order : (Example)

PG-TRHT60- H=100 - S - SOT - HD - T - Rs - Sp

Code Description :	PG : PG-Line	TRHT : Trough Tray	60 : Trough Side Height	100 : Trough Width
Material Type :	S : Steel	SS : Stainless Steel	AL : Aluminum	T:Thickness (1.5 - 2.0)mm
Type of Tray side :	I : Int. Return Flange	SOT : Snap-On Tray	Rs : Rung Size (WxH)	Sp : Rung spacing
Surface Finish :	P : Pre-Galvanized	HD : Hot Dip Galvanized	ES : Electrostatic Painted	EP : Electroplated

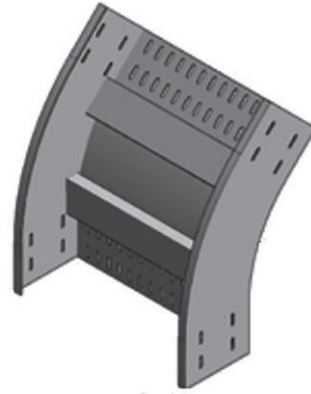
5.2.5 Cable Trough - Vertical outside Elbow 45°

Side Standard height:

60 mm Up To 200 mm

Standard Width: 100 Up to 1000 mm

Rung's Size: (70X25) mm



Code #	Width (W) (mm)	Side Height (H) (mm)	Thick. (mm)	X (mm)	Y (mm)	R (mm)
--------	----------------	----------------------	-------------	--------	--------	--------

5.2.5 Cable Trough - Vertical Outside Elbow 45°

PG-TRHVOE45-H-100	100	H=60 H=100 H=125 H=150 H=175 H=200	1.5 – 2.0	427	225	300
PG- TRHVOE45-H-200	200		1.5 – 2.0	455	260	
PG- TRHVOE45-H-300	300		1.5 – 2.0	490	310	
PG- TRHVOE45-H-400	400		1.5 – 2.0	510	335	600
PG- TRHVOE45-H-500	500		1.5 – 2.0	750	950	
PG- TRHVOE45-H-600	600		1.5 – 2.0	640	425	
PG- TRHVOE45-H-700	700		1.5 – 2.0	669	455	
PG- TRHVOE45-H-800	800		1.5 – 2.0	705	490	
PG- TRHVOE45-H-900	900		1.5 – 2.0	720	425	
PG- TRHVOE45-H-1000	1000		1.5 – 2.0	1250	1305	

How to order : (Example) PG-TRHT60- H=100 - S - SOT - HD - T - Rs - Sp

Code Description :	PG : PG-Line	TRHT : Trough Tray	60 : Trough Side Height	100 : Trough Width
Material Type :	S : Steel	SS : Stainless Steel	AL : Aluminum	T:Thickness (1.5 - 2.0)mm
Type of Tray side :	I : Int. Return Flange	SOT : Snap-On Tray	Rs : Rung Size (WxH)	Sp : Rung spacing
Surface Finish :	P : Pre-Galvanized	HD : Hot Dip Galvanized	ES : Electrostatic Painted	EP : Electroplated

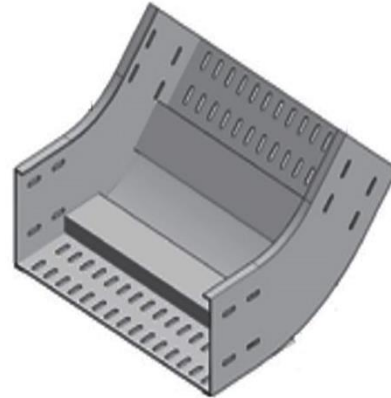
5.2.6 Cable Trough - Vertical Inside Elbow 45°

Side Standard height:

60 mm Up To 200 mm

Standard Width: 100 Up to 1000 mm

Rung's Size: (70X25) mm



Code #	Width (W) (mm)	Side Height (H) (mm)	Thick. (mm)	X (mm)	Y (mm)	R (mm)
--------	----------------	----------------------	-------------	--------	--------	--------

5.2.6 Cable Trough - Vertical Inside Elbow 45°

PG-TRHVIE45-H-100	100	H=60 H=100 H=125 H=150 H=175 H=200	1.5 – 2.0	427	225	300
PG- TRHVIE45-H-200	200		1.5 – 2.0	455	260	
PG- TRHVIE45-H-300	300		1.5 – 2.0	490	310	
PG- TRHVIE45-H-400	400		1.5 – 2.0	510	335	600
PG- TRHVIE45-H-500	500		1.5 – 2.0	750	950	
PG- TRHVIE45-H-600	600		1.5 – 2.0	640	425	
PG- TRHVIE45-H-700	700		1.5 – 2.0	669	455	
PG- TRHVIE45-H-800	800		1.5 – 2.0	705	490	
PG- TRHVIE45-H-900	900		1.5 – 2.0	720	425	
PG- TRHVIE45-H-1000	1000		1.5 – 2.0	1250	1305	

How to order : (Example) PG-TRHT60- H=100 - S - SOT - HD - T - Rs - Sp

Code Description :	PG : PG-Line	TRHT : Trough Tray	60 : Trough Side Height	100 : Trough Width
Material Type :	S : Steel	SS : Stainless Steel	AL : Aluminum	T:Thickness (1.5 - 2.0)mm
Type of Tray side :	I : Int. Return Flange	SOT : Snap-On Tray	Rs : Rung Size (WxH)	Sp : Rung spacing
Surface Finish :	P : Pre-Galvanized	HD : Hot Dip Galvanized	ES : Electrostatic Painted	EP : Electroplated

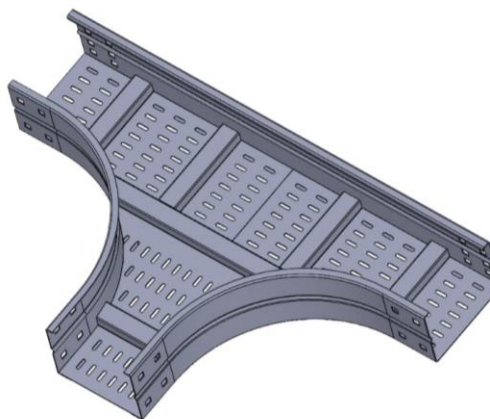
5.2.7 Cable Trough – Horizontal Tee

Side Standard height:

60 mm Up To 200 mm

Standard Width: 100 Up to 1000 mm

Rung's Size: (70X25) mm



Code #	Width (W) (mm)	Height (H) (mm)	Thick. (mm)	R (mm)
--------	----------------	-----------------	-------------	--------

5.2.7 Cable Trough - Horizontal Tee

PG-TRHHT-H-100	100 - 100 - 100	H=60 H=100 H=125 H=150 H=175 H=200	1.5 – 2.0	300
PG- TRHHT -H-200	200 – 200 – 200		1.5 – 2.0	
PG- TRHHT -H-300	300 – 300 – 300		1.5 – 2.0	
PG- TRHHT -H-400	400 – 400 – 400		1.5 – 2.0	600
PG- TRHHT -H-500	500 – 500 - 500		1.5 – 2.0	
PG- TRHHT -H-600	600 – 600 - 600		1.5 – 2.0	
PG- TRHHT -H-700	700 – 700 – 700		1.5 – 2.0	
PG- TRHHT -H-800	800 – 800 – 800		1.5 – 2.0	
PG- TRHHT -H-900	900 – 900 – 900		1.5 – 2.0	
PG- TRHHT -H-1000	1000 – 1000 - 1000		1.5 – 2.0	

How to order : (Example)

PG-TRHT60- H=100 - S - SOT - HD - T - Rs - Sp

Code Description :	PG : PG-Line	TRHT : Trough Tray	60 : Trough Side Height	100 : Trough Width
Material Type :	S : Steel	SS : Stainless Steel	AL : Aluminum	T:Thickness (1.5 - 2.0)mm
Type of Tray side :	I : Int. Return Flange	SOT : Snap-On Tray	Rs : Rung Size (WxH)	Sp : Rung spacing
Surface Finish :	P : Pre-Galvanized	HD : Hot Dip Galvanized	ES : Electrostatic Painted	EP : Electroplated

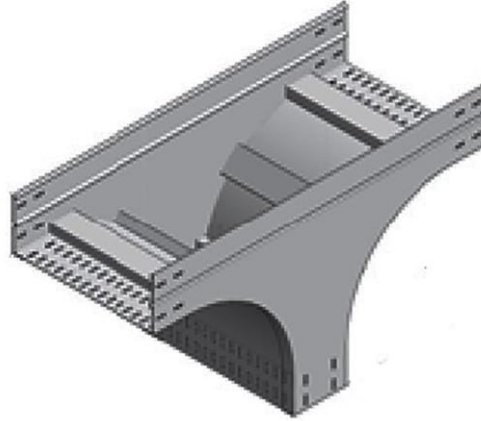
5.2.8 Cable Trough – Vertical Tee

Side Standard height:

60 mm Up To 200 mm

Standard Width: 100 Up to 1000 mm

Rung's Size: (70X25) mm



Code #	Width (W) (mm)	Side Height (H) (mm)	Thick. (mm)	R (mm)
--------	----------------	----------------------	-------------	--------

5.2.8 Cable Trough - Vertical Tee

PG-TRHVT-H-100	100 - 100 - 100	H=60 H=100 H=125 H=150 H=175 H=200	1.5 - 2.0	300
PG- TRHVT -H-200	200 – 200 – 200		1.5 - 2.0	
PG- TRHVT -H-300	300 – 300 – 300		1.5 - 2.0	
PG- TRHVT -H-400	400 – 400 – 400		1.5 - 2.0	600
PG- TRHVT -H-500	500 – 500 - 500		1.5 - 2.0	
PG- TRHVT -H-600	600 – 600 - 600		1.5 - 2.0	
PG- TRHVT -H-700	700 – 700 – 700		1.5 - 2.0	
PG- TRHVT -H-800	800 – 800 – 800		1.5 - 2.0	
PG- TRHVT -H-900	900 – 900 – 900		1.5 - 2.0	
PG- TRHVT -H-1000	1000 – 1000 - 1000		1.5 - 2.0	

How to order : (Example)

PG-TRHT60- H=100 - S - SOT - HD - T - Rs - Sp

Code Description :	PG : PG-Line	TRHT : Trough Tray	60 : Trough Side Height	100 : Trough Width
Material Type :	S : Steel	SS : Stainless Steel	AL : Aluminum	T:Thickness (1.5 - 2.0)mm
Type of Tray side :	I : Int. Return Flange	SOT : Snap-On Tray	Rs : Rung Size (WxH)	Sp : Rung spacing
Surface Finish :	P : Pre-Galvanized	HD : Hot Dip Galvanized	ES : Electrostatic Painted	EP : Electroplated

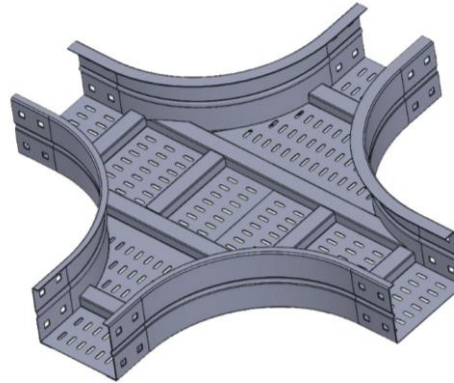
5.2.9 Cable Trough – Horizontal Cross

Side Standard height:

60 mm Up To 200 mm

Standard Width: 100 Up to 1000 mm

Rung's Size: (70X25) mm



Code #	Width (W) (mm)	Side Height (H) (mm)	Thick. (mm)	R (mm)
--------	----------------	----------------------	-------------	--------

5.2.9 Cable Trough - Horizontal Cross

Code #	Width (W) (mm)	Side Height (H) (mm)	Thick. (mm)	R (mm)
PG-TRHHC-H-100	100 - 100 - 100 - 100	H=60 H=100 H=125 H=150 H=175 H=200	1.5 - 2.0	300
PG- TRHHC -H-200	200 - 200 - 200 - 200		1.5 - 2.0	
PG- TRHHC -H-300	300 - 300 - 300 - 300		1.5 - 2.0	
PG- TRHHC -H-400	400 - 400 - 400 - 400		1.5 - 2.0	600
PG- TRHHC -H-500	500 - 500 - 500 - 500		1.5 - 2.0	
PG- TRHHC -H-600	600 - 600 - 600 - 600		1.5 - 2.0	
PG- TRHHC -H-700	700 - 700 - 700 - 700		1.5 - 2.0	
PG- TRHHC -H-800	800 - 800 - 800 - 800		1.5 - 2.0	
PG- TRHHC -H-900	900 - 900 - 900 - 900		1.5 - 2.0	
PG- TRHHC -H-1000	1000 - 1000 - 1000 - 1000		1.5 - 2.0	

How to order :	(Example)	PG-TRHT60- H=100 - S - SOT - HD - T - Rs - Sp			
Code Description :	PG : PG-Line	TRHT : Trough Tray	60 : Trough Side Height	100 : Trough Width	
Material Type :	S : Steel	SS : Stainless Steel	AL : Aluminum	T:Thickness (1.5 - 2.0)mm	
Type of Tray side :	I : Int. Return Flange	SOT : Snap-On Tray	Rs : Rung Size (WxH)	Sp : Rung spacing	
Surface Finish :	P : Pre-Galvanized	HD : Hot Dip Galvanized	ES : Electrostatic Painted	EP : Electroplated	

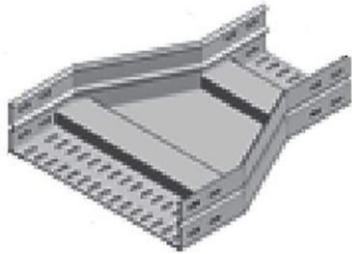
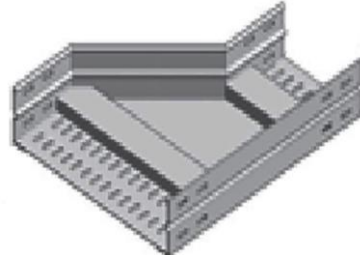
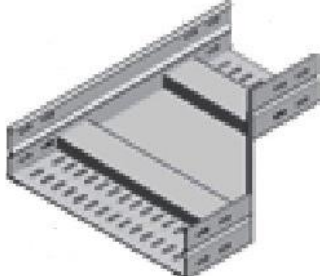
5.2.10 Cable Trough – Horizontal Reducer

Side Standard height:

60 mm Up To 200 mm

Standard Width: 100 Up to 1000 mm

Rung's Size: (70X25) mm

Code #	Width(mm) W2/W1	Length (mm)	Shape
5.2.10 Horizontal Reducers			
PG- TRHHR -CN200	200/100	500	
PG- TRHHR -CN300	300/ ----		
PG- TRHHR -CN400	400/ ----		
PG- TRHHR -CN500	500/ ----		
PG- TRHHR -CN600	600/ ----		
PG- TRHHR -CN700	700/ ----		
PG- TRHHR -CN800	800/ ----		
PG- TRHHR -RH200	200/100	500	
PG- TRHHR -RH300	300/ ----		
PG- TRHHR -RH400	400/ ----		
PG- TRHHR -RH500	500/ ----		
PG- TRHHR -RH600	600/ ----		
PG- TRHHR -RH700	700/ ----		
PG- TRHHR -RH800	800/ ----		
PG- TRHHR -LH200	200/100	500	
PG- TRHHR -LH300	300/ ----		
PG- TRHHR -LH400	400/ ----		
PG- TRHHR -LH500	500/ ----		
PG- TRHHR -LH600	600/ ----		
PG- TRHHR -LH700	700/ ----		
PG- TRHHR -LH800	800/ ----		

How to order : (Example)

PG-TRHT60- H=100 - S - SOT - HD - T - Rs - Sp

Code Description :	PG : PG-Line	TRHT : Trough Tray	60 : Trough Side Height	100 : Trough Width
Material Type :	S : Steel	SS : Stainless Steel	AL : Aluminum	T:Thickness (1.5 - 2.0)mm
Type of Tray side :	I : Int. Return Flange	SOT : Snap-On Tray	Rs : Rung Size (WxH)	Sp : Rung spacing
Surface Finish :	P : Pre-Galvanized	HD : Hot Dip Galvanized	ES : Electrostatic Painted	EP : Electroplated

5.3.1 Solid Covers

Material:

Steel / Stainless Steel / Aluminum

Surface Finish:

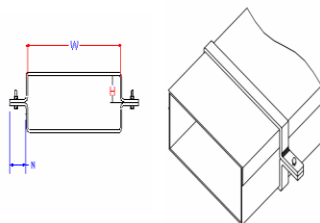
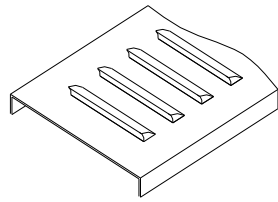
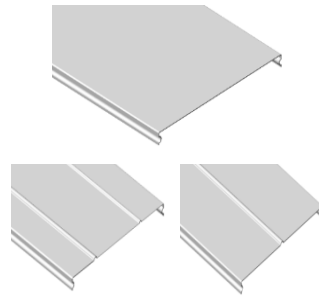
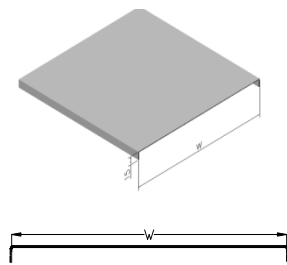
Hot- dip galvanized after fabrication according to ASTM A123 & DIN 50976

- zinc coating thickness on one side 50-60 μ m (350-420 gm²)

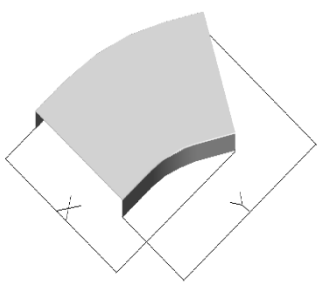
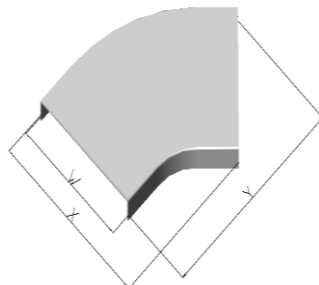
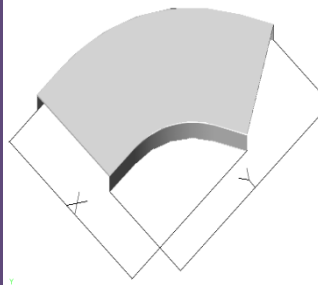
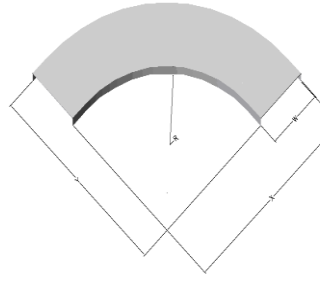
- Pre galvanized according to DIN 17162 on both sides 275 gm./m.
- Electrostatic Painting.
- Electroplated.

Standard Thickness: 1.0 mm – 1.25 mm – 1.5 mm – 2.0 mm

5.3.1 Solid Cover

Cover Clamp	Ventilated Cover	Snap-On Cover	Solid cover with flange
			
PG-CCP	PG-VC	PG- SOC	PG- FC

5.3.2 Horizontal Solid Cover for Cable Tray Fittings

Cover for H. Elbow 30°	Cover for H. Elbow 45°	Cover for H. Elbow 60°	Cover for H. Elbow 90°
			
PG-F-CHE30	PG-F-CHE45	PG-F-CHE60	PG-F-CHE90

How to order : (Example) PG-TRHT60- H=100 - S - SOT - HD - T - Rs - Sp

Code Description :	PG : PG-Line	TRHT : Trough Tray	60 : Trough Side Height	100 : Trough Width
Material Type :	S : Steel	SS : Stainless Steel	AL : Aluminum	T:Thickness (1.5 - 2.0)mm
Type of Tray side :	I : Int. Return Flange	SOT : Snap-On Tray	Rs : Rung Size (WxH)	Sp : Rung spacing
Surface Finish :	P : Pre-Galvanized	HD : Hot Dip Galvanized	ES : Electrostatic Painted	EP : Electroplated

5.3.2 Horizontal Solid Cover for Cable Tray Fittings

Material:

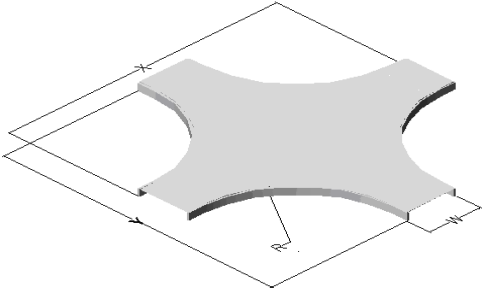
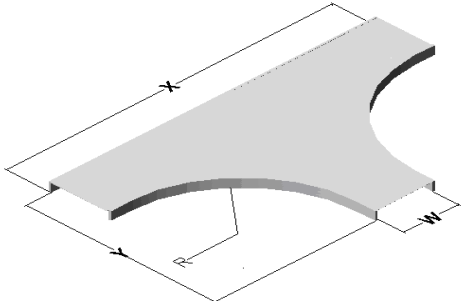
Steel / Stainless Steel / Aluminum

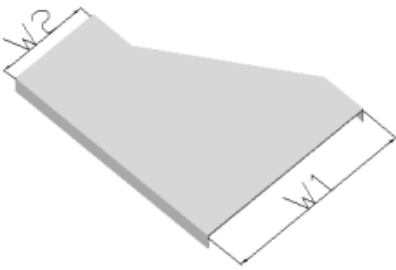
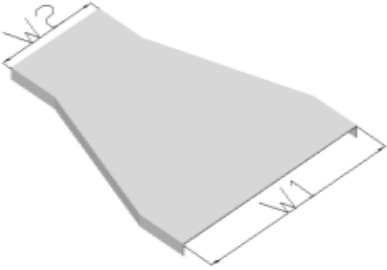
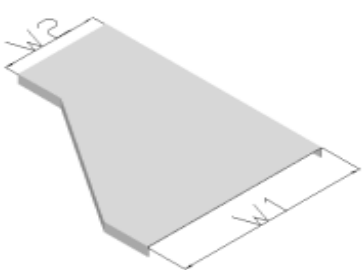
Surface Finish:

Hot-dip galvanized after fabrication according to ASTM A123 & DIN 50976 - zinc coating thickness on one side 50-60 μ m (350-420 gm²)

- Pre galvanized according to DIN 17162 on both sides 275 gm./m.
- Electrostatic Painting.
- Electroplated.

Standard Thickness: 1.0 mm – 1.25 mm – 1.5 mm – 2.0 mm

Horizontal Cross Cover	Horizontal Tee Cover
	
PG-F-HCRC	PG-F-HTC

(L/H) H. Reducer Cover	H. Offset Reducer Cover	(R/H) H. Reducer Cover
		
PG-F-HRDC-LH	PG-F-HRDC-CN	PG-F-HRDC-RH

How to order : (Example)	PG-TRHT60- H=100 - S - SOT - HD - T - Rs - Sp			
Code Description :	PG : PG-Line	TRHT : Trough Tray	60 : Trough Side Height	100 : Trough Width
Material Type :	S : Steel	SS : Stainless Steel	AL : Aluminum	T:Thickness (1.5 - 2.0)mm
Type of Tray side :	I : Int. Return Flange	SOT : Snap-On Tray	Rs : Rung Size (WxH)	Sp : Rung spacing
Surface Finish :	P : Pre-Galvanized	HD : Hot Dip Galvanized	ES : Electrostatic Painted	EP : Electroplated

5.3.3 Vertical Solid Cover for Cable Tray Fittings

Material:

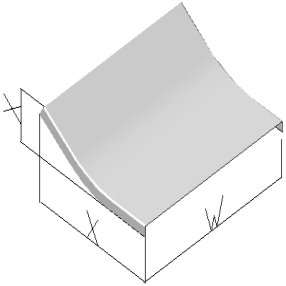
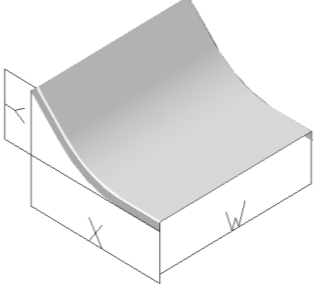
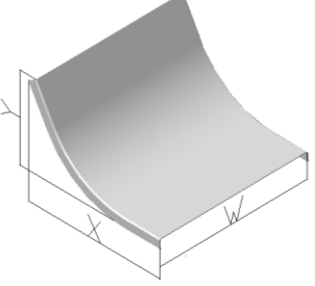
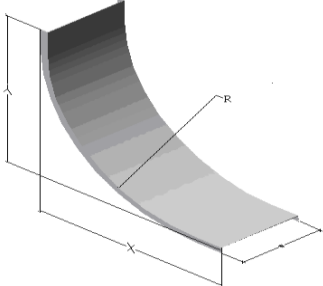
Steel / Stainless Steel / Aluminum

Surface Finish:

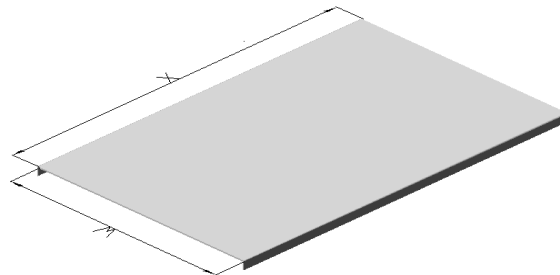
Hot-dip galvanized after fabrication according to ASTM A123 & DIN 50976 - zinc coating thickness on one side 50-60 μ m (350-420 gm²)

- Pre galvanized according to DIN 17162 on both sides 275 gm./m.
- Electrostatic Painting.
- Electroplated.

Standard Thickness: 1.0 mm – 1.25 mm – 1.5 mm – 2.0 mm

<u>Cover for V. Elbow 30°</u>	<u>Cover for V. Elbow 45°</u>	<u>Cover for V. Elbow 60°</u>	<u>Cover for V. Elbow 90°</u>
			
PG-F-CVE30	PG-F-CVE45	PG-F-CVE60	PG-F-CVE90

Vertical Tee Cover



PG-F-VTC

How to order :	(Example)	PG-TRHT60- H=100 - S - SOT - HD - T - Rs - Sp		
Code Description :	PG : PG-Line	TRHT : Trough Tray	60 : Trough Side Height	100 : Trough Width
Material Type :	S : Steel	SS : Stainless Steel	AL : Aluminum	T:Thickness (1.5 - 2.0)mm
Type of Tray side :	I : Int. Return Flange	SOT : Snap-On Tray	Rs : Rung Size (WxH)	Sp : Rung spacing
Surface Finish :	P : Pre-Galvanized	HD : Hot Dip Galvanized	ES : Electrostatic Painted	EP : Electroplated