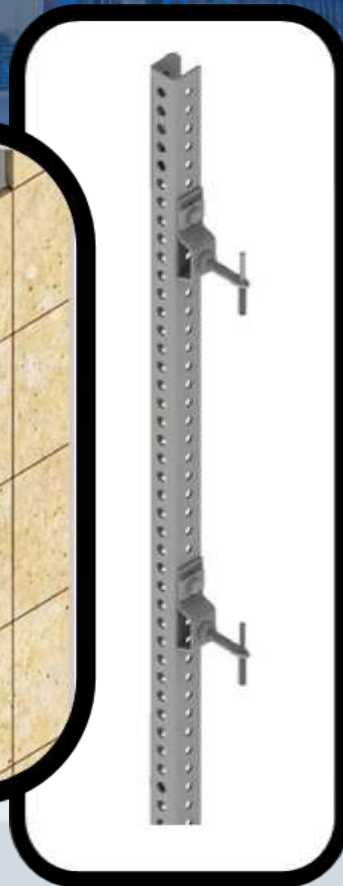




# Marble & Stone Cladding Mechanical Fixation System

PG - Line





## Marble and Stone Fixation system

### 1) C-Channel

#### Specifications:

#### Material:

Steel 37

#### Surface Finish:

- Hot-dip galvanized after fabrication according to ASTM A123 & DIN 50976 - zinc coating thickness on one side 50-60  $\mu\text{m}$  (350-420  $\text{gm}^2$ )
- Cold Galvanizing.

#### Standard size:

40 X 40 X 40 mm

Standard Length: 3000 mm Up to 6000 mm .

Standard Thickness: 3.0 & 4.0 mm

#### Note:

For C-Channel with 4.0 mm (Thk.), the standard Length is 3000 mm.



## Marble and Stone Fixation system

### 2) Z- Bracket

#### Specifications:

#### Material:

Steel 37

#### Surface Finish:

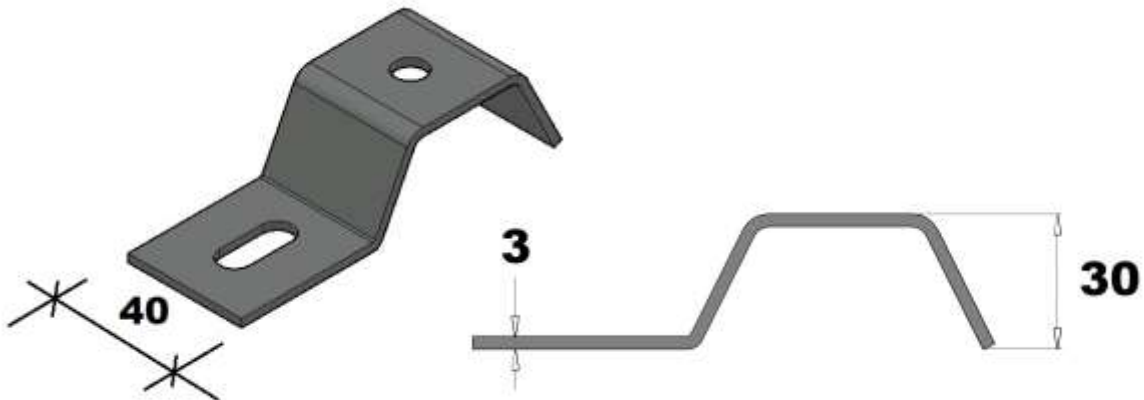
- Hot- dip galvanized after fabrication according to ASTM A123 & DIN 50976 - zinc coating thickness on one side 50-60  $\mu$  m (350-420  $gm^2$ )
- Cold Galvanizing.

**Standard Width:** 40 mm

**Standard Length:** 150 mm

**Standard Thickness:** 3.0 mm

**Standard Height:** 30 mm



## Marble and Stone Fixation system

### 3) Flat Head Bolt With Pin & Nut

#### Specifications:

#### Material:

- Steel 37
- Stainless Steel

#### Surface Finish:

- Hot-dip galvanized after fabrication according to ASTM A123 & DIN 50976 - zinc coating thickness on one side 50-60  $\mu$  m (350-420  $\text{gm}^2$ )
- Cold Galvanizing.
- Stainless steel

Standard Size (  $\varnothing$  ): 8 mm & 10 mm

Standard Length: 80 mm



## Marble and Stone Fixation system

### 4) L-Angle with 2 Slots

#### Specifications:

##### Material:

Steel 37

##### Surface Finish:

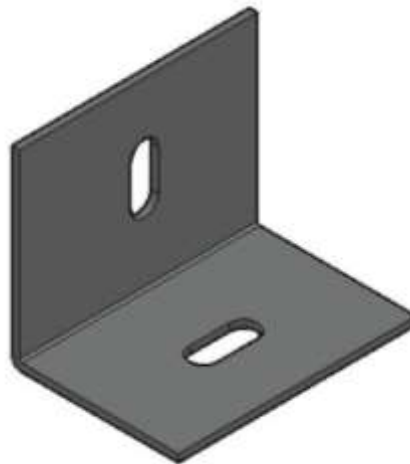
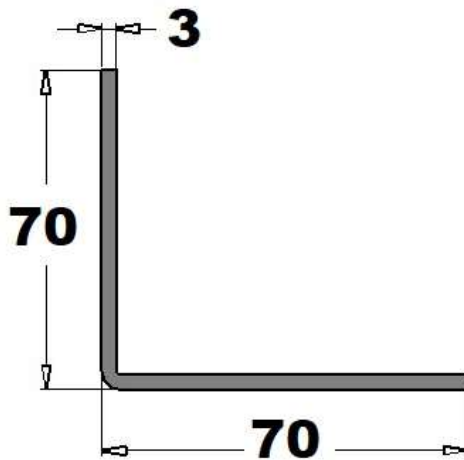
- Hot- dip galvanized after fabrication according to ASTM A123 & DIN 50976 - zinc coating thickness on one side 50-60  $\mu$  m (350-420 gm<sup>2</sup>)
- Cold Galvanizing.

Standard Width: 80 mm

Standard Length: 70 mm

Standard Height: 70 mm

Standard Thickness: 3.0 mm & 4.0 mm



## Marble and Stone Fixation system

### 5) L-Angle with 3 Slots

#### Specifications:

##### Material:

Steel 37

##### Surface Finish:

- Hot- dip galvanized after fabrication according to ASTM A123 & DIN 50976 - zinc coating thickness on one side 50-60  $\mu$  m (350-420 gm<sup>2</sup>)
- Cold Galvanizing.

Standard Width: 80 mm

Standard Length: 70 mm

Standard Height: 70 mm

Standard Thickness: 3.0 mm & 4.0 mm

